

No 96  
Spring 2022 Vol. 33

# Traffic Light REPORT

The magazine for traffic technology

## DIGITIZATION: SMART CITY



**INTERTRAFFIC**

29 MAR - 1 APR 2022 **AMSTERDAM**





Dear readers,

The current situation in the international commodity markets, particularly in the electrical and electronics sector, is creating major challenges. Significant production bottlenecks have been met by an unpredictably high demand for several months.

This very dynamic environment is coupled with noticeable price fluctuations in procurement markets and massive increases in freight and transport costs. In order to continue to deliver, we have initiated a wide range of measures. These include adjusting layouts, increasing inventories, and extending forecasts.

Monitoring our suppliers' deadlines takes more and more of our time and has an increasing influence over our daily routine. Despite all our efforts, even we cannot always completely rule out delivery delays. We therefore ask for your understanding.

Despite current challenges, we at RTB are looking ahead with confidence. And we are certain that with ideas and courage, we will also overcome this situation together!

Sincerely,

Dominik Schulte

## CONTENTS & EDITORIAL

2

## SMART MOBILITY

3

## SAFE TRAVEL DESPITE MOBILITY IMPAIRMENTS

4/5

## YOU'RE INVITED TO INTERTRAFFIC 2022

6/7

## LOC.ID NETWORK ENTHUSIASM

8

## AN ARMADA OF ROBOTAXIS

9

## TRADE FAIRS IN 2022: WE'LL BE THERE!

8/9

## SINGLE-SPACE DETECTION

10

## EXPANDING FOR SUCCESS

11

## ODDS & ENDS

12



Abacus (2500 B.C.) or parking meter  
(the parking meter was invented in 1935).  
Real analog technology from another era!





# MOBILITY

For people with mobility impairments

**One of RTB's key concerns is the ability of people with mobility impairments to equally participate in road traffic - and it's a concern RTB has addressed over the years when developing new products. The most current version of Smart mobility for persons with reduced mobility from January 2022 entitled "Smart mobility for persons with mobility impairments" offers a wide range of new ideas and functional approaches.**

The current document, which was developed by the working committee on "Communication and Orientation Resources for the Blind and Partially Sighted" in the DIN Standards Committee for Medicine, places great importance on the inclusion of people with disabilities. The focus is on the implementation of their experiences and requirements.

These requirements are to be increasingly and systematically incorporated into the development and optimization of mobility applications. People with limited mobility can benefit particularly from mobile applications (abbr.: apps) if they can be accessed and used without assistance.

RTB welcomes these developments, especially in light of the company's first app offering. LOC.id is a free smartphone app that offers solutions for the safe travel of blind people that do not conflict with the interests of residents.

## LOC.id

SAFE  
TRAVEL  
DESPITE  
IMPAIRMENTS  
MOBILITY

DIN

COMING MAY 2022





**Mobile applications can also support people with mobility impairments, in particular, in finding their way around public spaces, including publicly accessible buildings, and in using public transportation with up-to-date information and services. The new Smart mobility for persons with reduced mobility offers a variety of approaches for future implementation.**

The focus of these considerations is on barrier-free mobility applications – from route planning and navigation to arrival and departure schedules, as well as planning, requesting, and paying for on-demand transport. Depending on the provider, target group and data sources, the apps bring together numerous functions.

Finding the right mobility app is key here. Smart mobility for persons with reduced mobility, for example, calls for the creation of an application that automatically identifies and, if necessary, launches mobility applications appropriate for the user's current location. In this context, different user modes with preconfigured settings for beginners, advanced users and experts are requested.

In the area of public transportation, for example, public transit stops and vehicle information is relevant. Information provided while buses and trains are en route must also be tailored to the user.

Vehicles without acoustic signals in the field of electromobility and autonomously driving shuttles are relatively new, but very dynamic fields of application. In these sectors, in particu-



lar, the manufacturers of vehicles and road traffic technology must be involved early on in the development process to find practical solutions.

Acoustic signals in public spaces are of particular importance. Release, location, orientation and warning signals must be unambiguously recognizable. Key areas of application are traffic light systems, railroad crossings and places of public interest. Other important applications are acoustic signals at construction sites and obstacles to prevent accidents or disorientation.

RTB has been consistently taking into account considerations that have led to the editorial revisions to DIN 13278 in its product development for several years now. All interested parties and users are cordially invited to join the discussion!

#### **Source for Smart mobility for persons with reduced mobility**

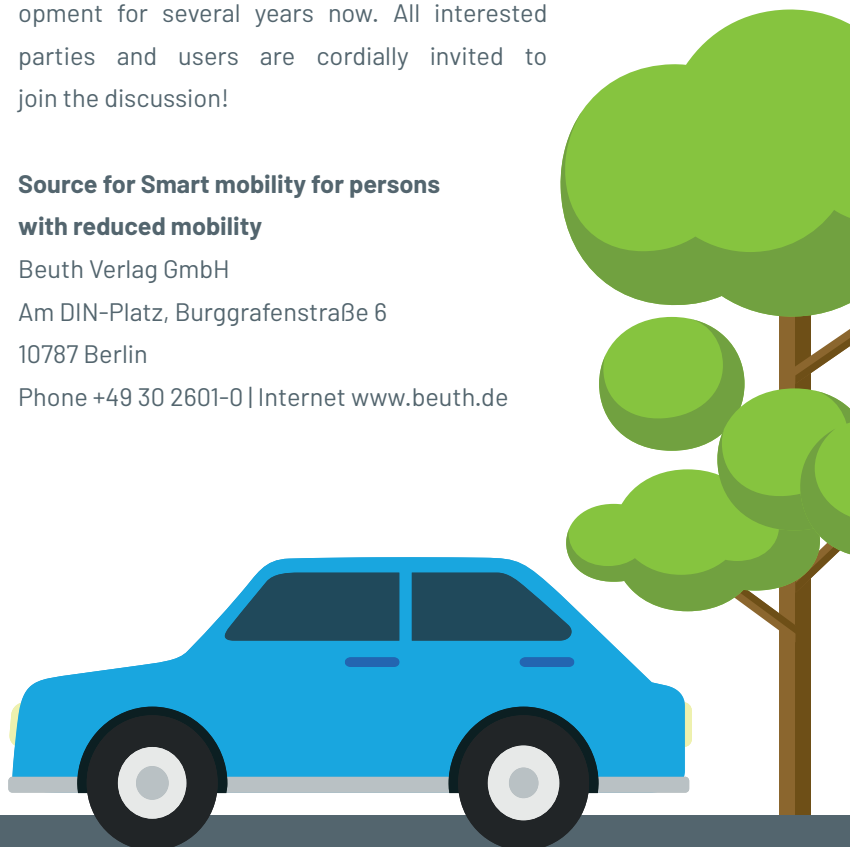
Beuth Verlag GmbH

Am DIN-Platz, Burggrafenstraße 6

10787 Berlin

Phone +49 30 2601-0 | Internet [www.beuth.de](http://www.beuth.de)

LOCid



# YOU'RE INVITED TO

AMSTERDAM  
March 29 – April 1, 2022  
Stand 01.219



It's finally time! After a long period of uncertainty due to the Coronavirus pandemic, INTERTRAFFIC 2022 will now take place in Amsterdam from March 29 to April 1. However, we must prepare you for the fact that you'll have to do without something at our stand. What you won't find are... bratwursts. But what you will find are all the "hot" trends in traffic technology.

We have missed the personal interaction with our customers, partners and prospective customers very much during these times. This also applies to daily life, with our families and circle of friends. That's why there was no question that we would participate in INTERTRAFFIC 2022 in Amsterdam. Because without dialog, it's impossible to move innovation forward.

When designing our booth, we were reminded of how much we miss carnivals and celebrations. That's why our booth will offer all the fun of a mini carnival. From ring the bell and a carousel horse to (fully operational) bumper cars—it's all there.

Beer, a sample for tasting (consolation prize) and mineral water will make your entertaining and informative visit to the RTB carnival something to remember. Cheers!

For the latest information about COVID and how to get your ticket, please visit [www.rtbsafetraffic.com!](http://www.rtbsafetraffic.com!)

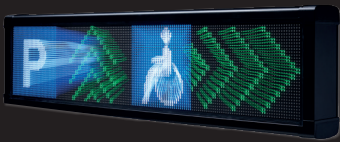


TOIPO



PUSH  BUTTON

DIALOG  DISPLAYS

LO  BO

PARKING TICKET  MACHINES

KOR  MO

ACOUS  TIC







# NETWORK ENTHUSIASM LOC.id

The LOC.id network presented itself for the first time last year at the ITS World Congress in Hamburg. The many discussions held showed a great need for advice on smart mobility. As a result, the network of contacts was expanded.

It is quite clear that the municipalities and the mobility industry appreciate the fact that renowned companies in the field of smart mobility have joined forces and are offering their combined expertise. From specialized city departments and advisory councils for the disabled to developers from the industry—organizations want to know more.

The next joint appearance will be at the world's largest trade fair featuring resources for the blind and partially sighted. Originally scheduled to take place in Frankfurt, the fair will be held digitally again this year.

High-profile journalist Amy Zayed (ARD and BBC) will report four times a day from a studio about the network's plans. The agenda will be available as of March at:

Internet: [www.SightCity.net](http://www.SightCity.net)

Facebook: [www.Facebook.com/SightCityFFM](https://www.facebook.com/SightCityFFM)

Instagram: [www.Instagram.com/sightcityffm](https://www.instagram.com/sightcityffm)

Feel free to forward this information to, for example, the advisory council for people with disabilities in your city!

## TRADE FAIRS IN 2022: WE'LL BE THERE!



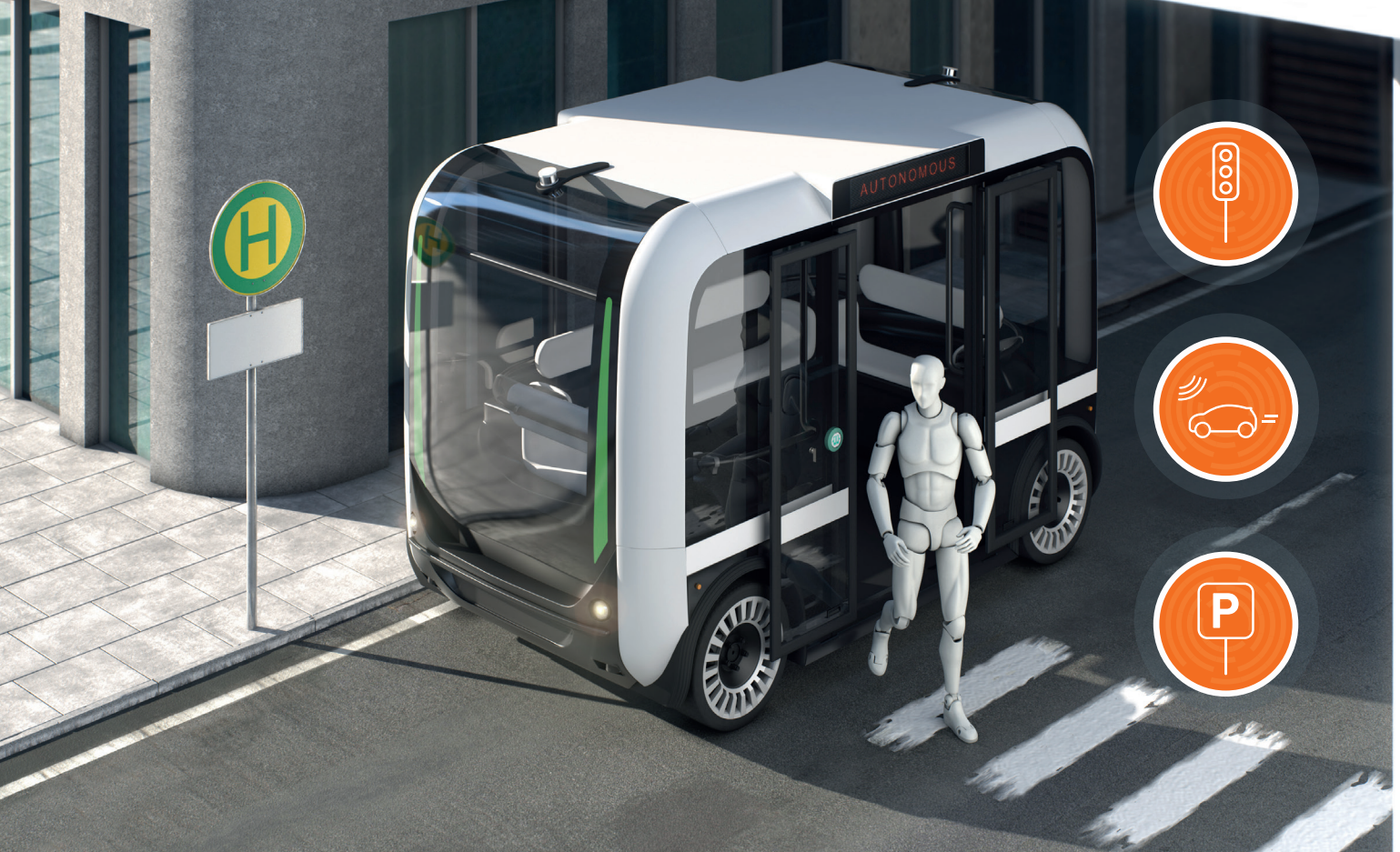
March 29-April 1  
Intertraffic, Amsterdam



May 10- 12  
IT Trans, Karlsruhe



May 18- 20  
Sight City, digital



# AN ARMADA OF ROBOTAXIS

In the automotive industry, it is also becoming increasingly clear that companies and organizations can only keep up with the rapid pace of development through cooperation. Expertise from other areas and companies is needed to withstand the high pressure to innovate. RTB experienced this trend first hand at the ITS World Congress in Hamburg.

There, new collaborations were formed around autonomous driving. For example, robotaxis are being deployed faster than expected. From accessibility (LOC.id) and parking (LOBO) to vehicle recognition (TOPO) - RTB is weighing in everywhere. You too can benefit from collaboration - the key word of the future.



July 25- 27  
IMSA Orlando



September 18- 22  
ITS Los Angeles

**light+building**

October 2- 6  
Light + Building, Frankfurt





More and more parking garage operators see the benefit

## SINGLE SPACE DETECTION

**Our pilot project in Frankfurt/Main has become a place of pilgrimage for parking garage owners and operators. There, for the first time, we installed LOBO, the dynamic parking guidance system, with its single-space detection feature. This system offers brand new possibilities for efficient management of available parking spaces.**

Whether at airports, in city centers or at businesses—parking space is becoming increasingly scarce and thus more valuable. That is why it is more important than ever to make optimal use of them. The key to LOBO is single-space detection, which makes finding free parking spaces easier than ever before. Infrared and ultrasonic sensors ensure high reliability, while multicolor LEDs indicate occupancy status.

Depending on local conditions, the sensors detect, either from a side perspective, from the front or from above, whether the respective parking space is occupied. LOBO also takes into account reflections caused by slanted areas, for example, which means occupied parking spaces are reliably displayed. In this way, the number of cars searching for open spaces in parking garages is significantly reduced, making extremely efficient operation also possible.

Experience to date shows that goals are fully achieved after only a short time. That's why this parking garage with the LOBO system will most certainly continue to welcome many experts from the industry!



# RTB

# EXPANDING FOR SUCCESS



**RTB continues to expand. Owner Rudolf Broer has appointed two additional managing directors, Dr. Thomas Krämer and Marc Rummeny. At the same time, RTB is growing stronger internationally by establishing a company in Hong Kong.**

From left to right: Matthias Rieger, Dr. Thomas Krämer, Marc Rummeny, Dominik Schulte, Rudolf Broer

"With the addition of two managing directors, we will be able to support our growth. Digitization and smart cities are no doubt two topics of the future that we are addressing. The demand for solutions in these areas is high and they also offer us great opportunities internationally," says Broer, explaining the reason for these new measures. The establishment of our own companies in Canada (2016) and Hong Kong (2021), which will allow RTB to be even closer to customers and interested parties, aligns with our vision.

Expansion of the management team began years ago with the appointment of purchasing manager Dominik Schulte as authorized representative. In the fall of 2020, Matthias Rieger was added as managing director for human resources and finance. RTB appointed the new managing director for sales and marketing from its own ranks;

Marc Rummeny completed his training as an electronics technician for devices and systems at the company. Graduate physicist Dr. Thomas Krämer from Berlin will be responsible for development and technology. As a blind person himself, he brings with him an additional qualification to address a topic of the future – mobility for people with special needs.

Although the company has expanded its management team, RTB will still foster its keys to success. "We will continue to be a company with as little hierarchy and bureaucracy as possible. I am grateful for the many creative minds who, through their own initiative and ideas, are continuously optimizing our products and developing new solutions. As we move forward, we will continue to strengthen the freedom and responsibility of the individual", emphasizes Broer.





## NEW COMPETITION?

In the field of detection, RTB's products have gained a considerable market share within just a few years. As the only detector system that can integrate an environmental sensor with length and speed measurement, this generation of the TOPO product family is technologically quite advanced.

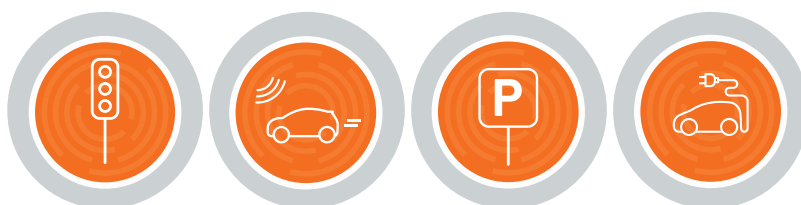
Meanwhile, vehicles have evolved significantly. In theory, the sensors installed in cars can also be used to analyze the environment. However, whether they can actually provide reliable data for directing traffic flows has yet to be proven in practice.

## LET'S TALK IN-PERSON!



In-person conversations cannot be completely replaced even by modern technology. Our RTB Studio with video conferencing via Microsoft Teams or other tools is very popular, but face-to-face dialogue also remains very valuable.

To complement our video studio, RTB offers an additional alternative. Our sales experts will visit municipalities at construction yards or meet industry partners in other outdoor settings. Take advantage of these opportunities!



**PRINTING**  
 Machradt Graphischer Betrieb KG, Bad Lippspringe  
**EDITING**  
 HACK PR- und Werbeagentur GmbH, Paderborn  
**LAYOUT**  
 Melanie Greguol, RTB GmbH & Co. KG, Bad Lippspringe

**PUBLISHER**  
 RTB GmbH & Co. KG  
 Managing Director Rudolf Broer, Matthias Rieger  
 Schulze-Delitzsch-Weg 10, 33175 Bad Lippspringe  
 Phone: +49 5252 9706-0; Fax: +49 5252 9706-10  
[ampel-nachrichten@rtb-bl.de](mailto:ampel-nachrichten@rtb-bl.de) | [www.rtbsafetraffic.com](http://www.rtbsafetraffic.com)