



# LOCxid

THE **KEY** TO MANY DIGITAL  
SERVICES FOR MOBILITY OF  
VISUAL IMPAIRED PEOPLE

# The idea

The blind and visually impaired face a wide range of dangers in their everyday lives. Navigating public administration buildings, maneuvering construction sites, traversing pedestrian crossings, and other activities present new challenges and push mobility limits again and again.

With the goal of breaking down these barriers and advocating for true accessibility, a special network has been established under the umbrella of the German Federation of the Blind and Partially Sighted (DBSV). Companies from public transportation, indoor navigation, traffic signals, construction sites, and elevator manufacturing have joined forces to turn the notion of the LOC.id app into reality. LOC.id is an app for everything. Once this "search app" is downloaded to the user's cell phone, it acts like an "electronic guide dog" to check out the current situation and detect any relevant network partner applications (apps) that apply in that moment. If one is found, the application is either opened on the cell phone or a recommendation is made to install it. When it comes to car-to-x communication, LOC.id also offers a forward-thinking approach that guarantees people with impaired vision safe mobility when sharing the road with autonomous, electric-powered vehicles.

Numerous companies from the industries mentioned above have already joined the network and we look forward to welcoming other interested organizations who want to actively help improve accessibility.



1



Where exactly is the office I'm looking for? Navigating public administration buildings is not easy for the blind and partially sighted. Verbal announcements issued by the smartphone can guide users to the right office.

2



How do people who cannot see find the right bus or train? Verbal announcements at stops, as well as speaking buses and trains offer assistance and help to ensure accurate orientation.

3

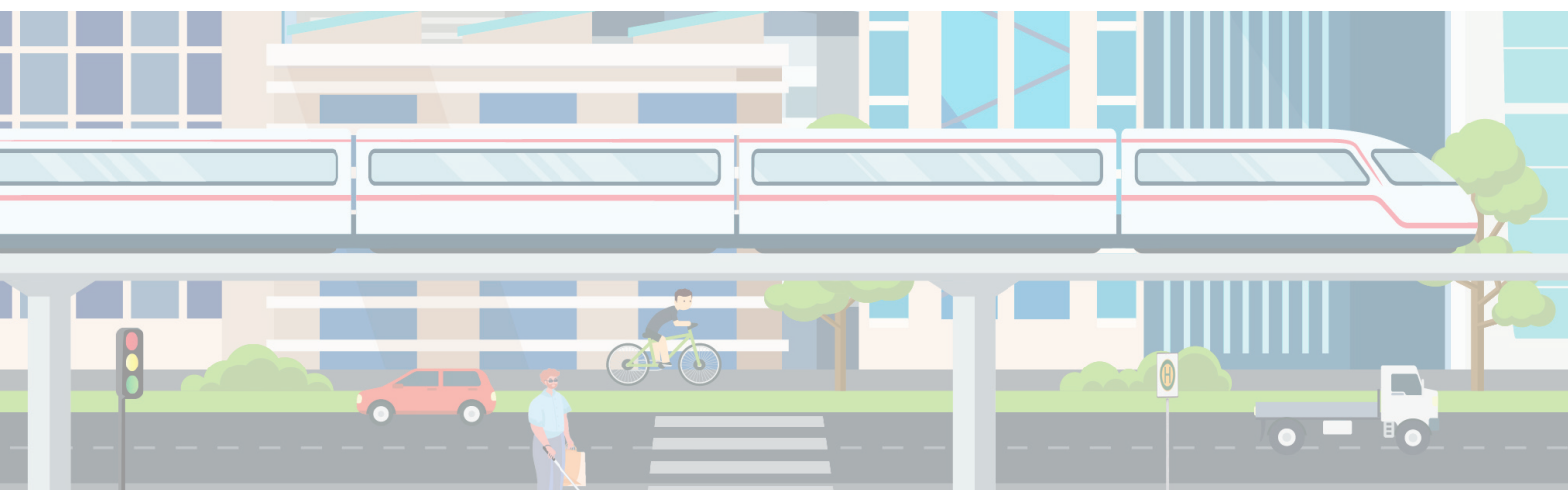


Which of the three elevators is opening its doors? A smartphone can provide the answer and also immediately help with selecting the right floor.

4



How do I cross the street safely? The green-phase request can already be made as the pedestrian approaches the traffic light mast and the acoustic signals offer clear guidance for safe crossing.



LOCid

5



## CONSTRUCTION SITES

Where exactly should I walk? Narrow detour paths at construction sites are not easy to find. Now there are individual navigation options that provide acoustic cues to help pedestrians find the right path.

6



## E-SCOOTER

Who does not know this problem? Sometimes e-scooters are carelessly left on the sidewalks or left lying around and become a tripping hazard and an additional stress factor, especially for blind and highly visually impaired people.

If the blind person with LOC.id approaches the e-scooter, a warning signal is emitted by the e-scooter. We want to implement this idea together with the company BOLT Technology OÜ.

# LOCid



# The Network

## NETWORK-MEMBERS



## NETWORK-SUPPORTER

